

NE 1/4, NE 1/4, SECTION 31, TOWNSHIP 28 NORTH, RANGE 5 EAST, W.M.

STELLA & FLOYD'S DOG DAYCARE

13209 BOTHELL-EVERETT HWY

MILL CREEK, WA 98012

APPLICANT

JULIE NEALEY
9402 224TH ST SW
EDMONDS, WA 98020
425.408.3254
CONTACT: JULIE NEALEY

CONSULTANTS

ARCHITECT
CAPITAL GROUP
2513 ROCKEFELLER AVE
EVERETT, WA 98021
425.317.8017 FAX 317.8489
CONTACT: SANDRA MARTIN

CIVIL ENGINEER
CG ENGINEERING
250 4TH AVE S, SUITE 200
EDMONDS, WA 98020
425.778.8500 FAX 778.5536
CONTACT: JARED UNDERBRINK

SOIL/GEOTECH ENGINEER
NELSON GEOTECHNICAL ASSOC.
17311 135TH AVE NE, STE A-500
WOODINVILLE, WA 98072
425.486.1669
CONTACT: MAHER SHEBL

WETLAND ECOLOGIST
WETLAND RESOURCES, INC
9505 19TH AVE SE, STE 106
EVERETT, WA 98208
425.337.3174
CONTACT: SCOTT WALTERS

UTILITIES

STRUCTURAL ENGINEER
CG ENGINEERING
250 4TH AVE S, SUITE 200
EDMONDS, WA 98020
425.778.8500 FAX 778.5536
CONTACT: CAROLYN JEWETT

WATER/SEWER
SILVER LAKE WATER & SEWER DISTRICT
PO BOX 13610
MILL CREEK, WA 98012
425.337.3647

ELECTRIC
SEATTLE CITY LIGHT
3912 156TH ST SE
BOTHELL, WA 98012
425.338.9696

SURVEYOR
PACIFIC COAST SURVEYS, INC
PO BOX 13610
MILL CREEK, WA 98082
425.512.7099 FAX 357.3577
CONTACT: DARREN RIDDLE

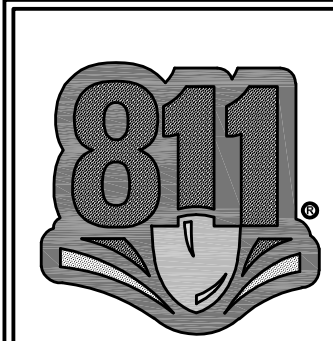
LEGAL DESCRIPTION

ALL THAT PORTION OF THE NORTHEAST QUARTER OF SECTION 31, TOWNSHIP 28 NORTH, RANGE 5 EAST, W.M., IN SNOHOMISH COUNTY, WASHINGTON, DESCRIBED AS FOLLOWS:

BEGINNING AT THE NORTHEAST CORNER OF SAID SECTION 31;
THENCE SOUTH 00°54' WEST 160 FEET;
THENCE NORTH 51°03'15" WEST 113.57 FEET TO THE SOUTHEASTERLY RIGHT OF WAY LINE OF STATE HIGHWAY;
THENCE SOUTHWESTERLY ALONG SAID SOUTHEASTERY LINE ON A CURVE TO THE RIGHT HAVING A RADIUS OF 317.9 FEET, A DISTANCE OF 117.92 FEET;
THENCE SOUTH 74°11' WEST ALONG SAID SOUTHEASTERLY LINE 32.08 FEET TO THE TRUE POINT OF BEGINNING;
THENCE SOUTH 51°03'15" EAST TO EAST LINE OF SAID SECTION;
THENCE SOUTH TO A POINT WHICH IS 560 FEET SOUTH OF THE NORTHEAST CORNER OF SAID SECTION;
THENCE SOUTH 89°58' WEST 330 FEET;
THENCE NORTH 04°58'54" WEST 371.04 FEET TO THE SOUTHEASTERLY RIGHT OF WAYLINE OF STATE HIGHWAY;
THENCE NORTH 74°11' EAST 150 FEET, MORE OR LESS, TO THE TRUE POINT OF BEGINNING.

EXCEPT THAT PORTION CONVEYED TO THE STATE OF WASHINGTON UNDER SNOHOMISH COUNTY CAUSE NO. 02-207147-1.

SITUATE IN THE COUNTY OF SNOHOMISH, STATE OF WASHINGTON.



CAUTION!
CALL BEFORE YOU DIG!
BURIED UTILITIES EXIST IN THE AREA AND UTILITY INFORMATION SHOWN MAY NOT BE COMPLETE. CONTACT THE ONE- CALL UTILITY LOCATE SERVICE A MINIMUM OF 48 HOURS PRIOR TO CONSTRUCTION
1-800-424-5555

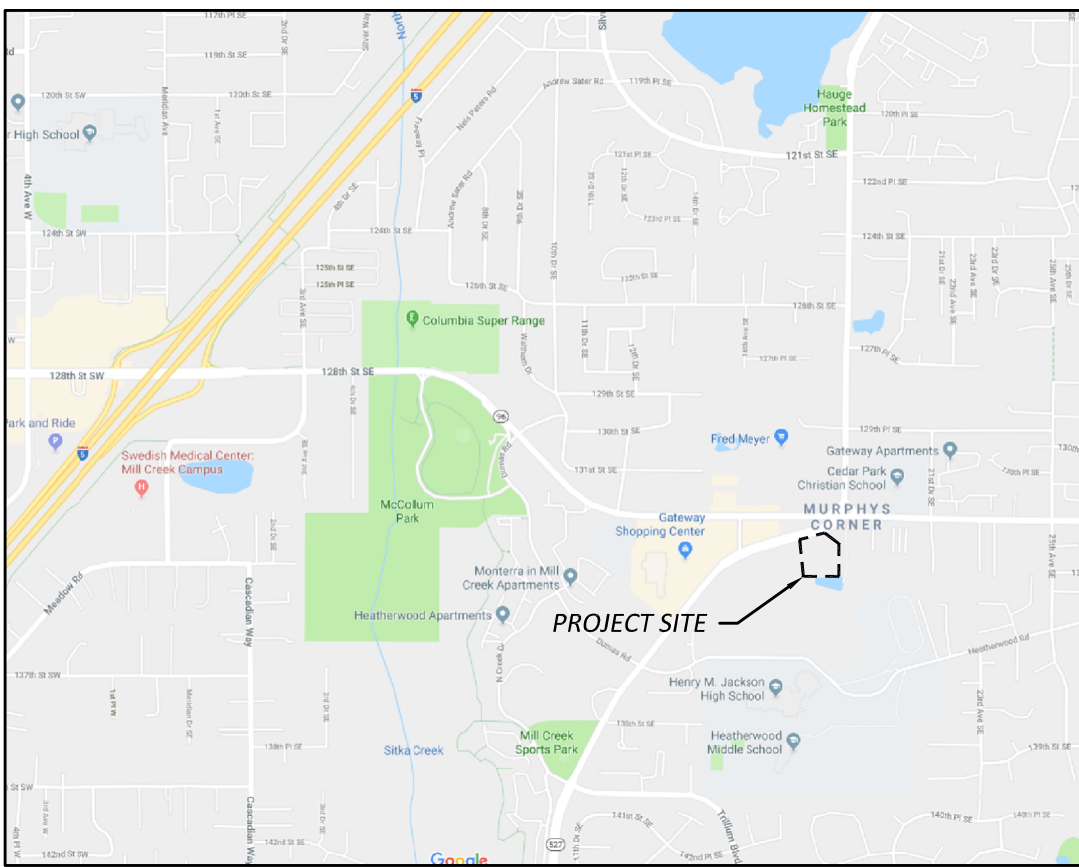
SHEET INDEX	
C1.1	COVER SHEET & GENERAL NOTES
C2.1	TEMPORARY EROSION CONTROL PLAN
C2.2	EROSION CONTROL DETAILS
C3.1	GRADING & DRAINAGE PLAN & DETAILS
C3.2	GRADING & DRAINAGE DETAILS
C4.1	WATER & SEWER PLAN

BASIS OF BEARING

THE MONUMENTED EAST LINE OF THE NE/4 SECTION 31 AS THE BEARING OF NORTH 01°45'29" EAST.

DATUM

NAVD 88

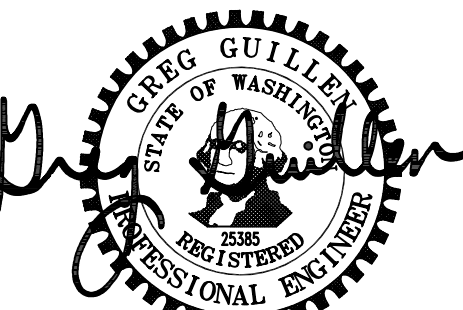


VICINITY MAP

NTS



ENGINEERING
250 4TH AVE. S., SUITE 200
EDMONDS, WASHINGTON 98020
PHONE (425) 778-8500
FAX (425) 778-5536



01/18/19

GENERAL NOTES

CITY OF MILL CREEK GENERAL CONSTRUCTION NOTES:

- ALL WORK AND MATERIALS SHALL BE IN ACCORDANCE WITH THE CURRENT EDITION OF THE WSDOT "STANDARD SPECIFICATIONS FOR ROAD, BRIDGE, AND MUNICIPAL CONSTRUCTION". CITY OF MILL CREEK STANDARD PLANS AND ANY DEVELOPMENT CONDITIONS OF APPROVAL. IT SHALL BE THE SOLE RESPONSIBILITY OF THE APPLICANT AND THEIR PROFESSIONAL ENGINEER TO CORRECT AND NOTE ANY ERRORS, OMISSIONS, OR VARIATIONS FROM THE REQUIREMENTS FOUND IN THESE PLANS.
- A CITY RIGHT-OF-WAY (ROW) PERMIT IS REQUIRED FOR ANY WORK THAT WILL IMPACT THE PUBLIC ROW IN ACCORDANCE WITH MCMC CHAPTER 12.04.
- PRIOR TO BEGINNING ANY SITE CONSTRUCTION, THE APPLICANT, THEIR ENGINEER AND CONTRACTOR SHALL MEET WITH THE PUBLIC WORKS DEPARTMENT FOR A PRE-CONSTRUCTION MEETING.
- A COPY OF THE APPROVED PLANS MUST BE ON THE SITE WHENEVER CONSTRUCTION IS IN PROGRESS.
- PRIOR TO ANY TREE REMOVAL ON SITE, THE CLEARING LIMITS SHALL BE LOCATED AND PROTECTED AS REQUIRED ON THE APPROVED PLANS. BARRIER FENCING SHALL BE PLACED AROUND THE DRIPLINE OF THE TREES TO BE RETAINED AND CITY STAFF SHALL FIELD INSPECT THE TREES TO BE RETAINED PRIOR TO COMMENCEMENT OF CLEARING AND GRADING ACTIVITIES.
- IN ACCORDANCE WITH MCMC SECTION 15.10.075.B, WHERE TREES DESIGNATED TO BE RETAINED ARE DAMAGED, DESTROYED OR REMOVED DURING THE CONSTRUCTION OF THE PROPOSED IMPROVEMENTS, A PENALTY IN THE AMOUNT OF \$1,000 MAY BE ASSESSED PER TREE, AND EACH TREE SHALL BE REPLACED AT A 3:1 RATIO.
- APPROPRIATE BEST MANAGEMENT PRACTICES (BMP'S) FOR EROSION AND SEDIMENT CONTROL SHALL BE INSTALLED PRIOR TO ANY GRADING OR LAND CLEARING IN ACCORDANCE WITH THE APPROVED STORMWATER POLLUTION PREVENTION PLAN (SWPPP). THESE BMP'S MUST BE SATISFACTORILY MAINTAINED UNTIL CONSTRUCTION AND LANDSCAPING IS COMPLETED AND THE POTENTIAL FOR ONSITE EROSION HAS PASSED.
- BETWEEN OCTOBER 1 AND APRIL 30, NO SOILS SHALL REMAIN EXPOSED AND UNWORKED FOR MORE THAN TWO DAYS. FROM MAY 1 THROUGH SEPTEMBER 30, NO SOILS SHALL REMAIN EXPOSED AND UNWORKED FOR MORE THAN SEVEN DAYS. ANY UNWORKED SOIL SHALL BE STABILIZED WITH AN APPROVED BMP UNLESS OTHERWISE APPROVED BY THE CITY ENGINEER.
- PUBLIC STREETS SHALL BE CLEANED ONCE PER DAY WITH A REGENERATIVE AIR VACUUM SWEEPER OR AS DIRECTED BY THE CITY. FLUSHING OF STREETS WITH WATER WILL NOT BE ALLOWED.
- LOCATIONS OF EXISTING UTILITIES ARE APPROXIMATE. THE CONTRACTOR SHALL CONTACT THE UNDERGROUND UTILITY LOCATE CENTER AT 811 NO LESS THAN 48 HOURS PRIOR TO BEGINNING OF CONSTRUCTION.
- THE CONTRACTOR SHALL COMPLY WITH ALL OTHER NECESSARY PERMITS AND REQUIREMENTS BY THE CITY OF MILL CREEK OR OTHER GOVERNING AUTHORITY/AGENCY.

CITY OF MILL CREEK STORM DRAINAGE NOTES:

- ALL CATCH BASINS TO BE TYPE I UNLESS OTHERWISE REQUIRED.
- ALL CATCH BASINS WITH A DEPTH OVER FIVE FEET TO THE FLOW LINE SHALL BE TYPE II.
- STANDARD LADDER STEPS SHALL BE PROVIDED IN ALL CATCH BASINS AND MANHOLES EXTENDING OVER FIVE FEET IN DEPTH.
- ALL DRAINAGE STRUCTURES SHALL INCORPORATE A DUCTILE IRON FRAME AND GRATE OR SOLID LID IN ACCORDANCE WITH THE FOLLOWING REQUIREMENTS:
 - A) STRUCTURES RECEIVING FLOW IN ONLY ONE DIRECTION SHALL INCLUDE A VANED FRAME AND GRATE.
 - B) STRUCTURES IN A CURB LINE RECEIVING FLOW IN TWO DIRECTIONS SHALL USE A THROUGH CURB INLET WITH A VANED BI-DIRECTIONAL GRATE WITH A FULL HEIGHT DIAMOND PLATE HOOD.
 - C) ROLLED FRAME AND GRATES MAY BE USED ONLY WHERE APPROVED BY THE CITY ENGINEER.
 - D) STRUCTURES OUTSIDE A CURB LINE (E.G. PARKING LOTS) RECEIVING FLOW FROM MULTIPLE DIRECTIONS MAY USE A FRAME AND GRATE WITH A FLAT HERRINGBONE PATTERN OR EQUIVALENT.
 - E) ALL DRAINAGE STRUCTURES OUTSIDE A WATER COLLECTION AREA SHALL HAVE SOLID LIDS UNLESS OTHERWISE APPROVED BY THE CITY.
 - F) ALL GRATES OR SOLID LIDS WITHIN THE PUBLIC RIGHT-OF-WAY SHALL BE NON-LOCKING. GRATES AND SOLID LIDS OUTSIDE THE PUBLIC RIGHT-OF-WAY MAY BE LOCKING AT THE OWNER'S DISCRETION.
 - G) ALL FRAME AND GRATES OR SOLID LIDS SHALL HAVE AN H5-25 RATING.
- THE CONTRACTOR SHALL BE RESPONSIBLE FOR ADJUSTING ALL FRAMES AND GRATES OR SOLID LIDS PRIOR TO FINAL PAVING. ALL UTILITY MANHOLES, VALVES AND SURVEY MONUMENTS SHALL BE ADJUSTED AFTER PAVING.
- STUB OUTS FOR TRADITIONAL YARD, FOUNDATION AND ROOF DRAINS SHALL BE INSTALLED BEHIND THE SIDEWALK AS REQUIRED. POSITIVE DRAINAGE IS TO BE PROVIDED WITH A CONNECTION TO THE NEAREST CATCH BASIN STRUCTURE. THE LOCATION AND TYPE OF STUB-OUT SHALL BE INDICATED WITH AN ABOVE GROUND MARKER.
- ALL STORM WATER DETENTION AND WATER QUALITY FACILITIES, FLOW CONTROL STRUCTURES, PIPES AND CATCH BASINS SHALL BE JETTED AND CLEANED PRIOR TO FINAL CITY ACCEPTANCE.
- ALL STORM DRAIN PIPES SHALL BE 12" MINIMUM DIAMETER UNLESS APPROVED BY THE CITY ENGINEER. PIPE AND JOINT MATERIALS SHALL BE IN ACCORDANCE WITH SECTIONS 7-04 AND 9-05 OF THE WSDOT STANDARD SPECIFICATIONS.

CITY OF MILL CREEK LOW IMPACT DEVELOPMENT CONSTRUCTION NOTES:

- CONTACT CITY PUBLIC WORKS STAFF FOR A SEPARATE PRE-CONSTRUCTION MEETING PRIOR TO BEGINNING WORK ON ALL LID SITES.
- INSTALL PERIMETER PROTECTION AROUND ALL RAIN GARDEN, BIOSWALE, OR PERMEABLE PAVEMENT SITES AFTER ROUGH GRADING WORK.
- PERIMETER PROTECTION MUST REMAIN IN PLACE AND BE MAINTAINED AROUND ALL LID SITES UNTIL FACILITY CONSTRUCTION BEGINS. THIS IS TO PREVENT COMPACTION OF NATIVE SOILS AND EXISTING SOILS FROM GETTING CLOGGED WITH SEDIMENT.
- RAIN GARDEN CONSTRUCTION SHALL FOLLOW THE CURRENT RAIN GARDEN HANDBOOK FOR WESTERN WASHINGTON FOR SPECIFICATIONS AND CONSTRUCTION GUIDANCE.
- BIOSWALE CONSTRUCTION SHALL FOLLOW THE CURRENT LID TECHNICAL GUIDANCE MANUAL FOR SPECIFICATIONS AND CONSTRUCTION GUIDANCE.
- BIORETENTION SOIL MIX REQUIRES A LAB REPORT FOR PHYSICAL SUBMITTAL TO THE CITY INSPECTOR.
- PERMEABLE PAVEMENT SHALL BE COVERED WITH PLASTIC AFTER INSTALLATION IN ORDER TO PREVENT CONSTRUCTION MATERIALS FROM CLOGGING THE SURFACE. PLASTIC SHALL NOT BE REMOVED UNTIL ALL EARTH WORK AND BUILDING CONSTRUCTION IS COMPLETE.
- ALL RAIN GARDENS SHALL HAVE A CITY APPROVED EDUCATION SIGN INSTALLED AFTER COMPLETION.
- LOW IMPACT DEVELOPMENT SITES SHALL BE FULLY FUNCTIONING PRIOR TO FINAL CITY ACCEPTANCE.

CITY OF MILL CREEK LANDSCAPE NOTES:

- TREES SHALL HAVE ONE CENTRAL LEADER. IF THE LEADER WAS HEADED, A NEW LEADER (WITH A LIVE TERMINAL BUD) AT LEAST ONE-HALF THE DIAMETER OF THE PRUNING CUT SHALL BE PRESENT
 - ALL TREES ARE ASSUMED TO HAVE ONE CENTRAL LEADER TREES UNLESS A DIFFERENT FORM IS SPECIFIED IN THE PLANT LIST OR DRAWINGS.
- TWINE AND BURLAP USED FOR WRAPPING THE ROOT BALL PACKAGE SHALL BE NATURAL, BIODEGRADABLE MATERIAL.
- CONTAINER ROOT BALL SHAVING: THE OUTER SURFACES OF ALL CONTAINER TREES, INCLUDING THE TOP, SIDES AND BOTTOM OF THE ROOT BALL SHALL BE SHAVED TO REMOVE ALL CIRCLING, DESCENDING, AND MATTED ROOTS. SHAVING SHALL BE PERFORMED USING SAWS, KNIVES, SHARP SHOVELS OR OTHER SUITABLE EQUIPMENT THAT IS CAPABLE OF MAKING CLEAN CUTS ON THE ROOTS. SHAVING SHALL REMOVE A MINIMUM OF ONE INCH OF ROOT MAT OR UP TO 2 INCHES AS REQUIRED TO REMOVE ALL ROOT SEGMENTS THAT ARE NOT GROWING REASONABLY RADIAL TO THE TRUNK.
- FOR TREES TO BE PLANTED IN PREPARED PLANTING SOIL THAT IS DEEPER THAN THE ROOT BALL DEPTH, COMPACT THE SOIL UNDER THE ROOT BALL USING A MECHANICAL TAMPER TO ASSURE A FIRM BEDDING FOR THE ROOT BALL. PLANTING SOIL IS THE SITE SOIL EXCAVATED FROM THE PLANTING PIT, MIXED WITH A MAXIMUM OF 5% ORGANIC MATTER.
- ROOT BARRIER IS REQUIRED ADJACENT TO TREES PLANTED IN A PLANTER STRIP NARROWER THAN SIX FEET AND IN LANDSCAPE ISLANDS. BARRIER ADJACENT TO THE CURB SHALL BE 24 INCHES AND BARRIER ADJACENT TO THE SIDEWALK SHALL BE 18 INCHES.
- SET TOP OUTER EDGE OF THE ROOT BALL AT THE AVERAGE ELEVATION OF THE PROPOSED FINISH. SET THE PLANT PLUMB AND UPRIGHT IN THE CENTER OF THE PLANTING HOLE. THE TREE GRAFT, IF APPLICABLE, SHALL BE VISIBLE ABOVE THE GRADE. DO NOT PLACE SOIL ON TOP OF THE ROOT BALL.
- AFTER THE ROOT BALL HAS BEEN PLACED IN THE EXCAVATED PIT, REMOVE ROOT BALL WRAPPING (BURLAP, WIRE BASKET, TWINE, ETC.) FROM THE TOP 12 INCHES OR 2/3 OF THE ROOT BALL, WHICHEVER IS GREATER. CUT THE BURLAP AWAY; DO NOT FOLD DOWN ONTO THE PLANTING SOIL. STABILIZE THE ROOT BALL BY FIRING A RING OF BACKFILL SOIL AROUND THE BOTTOM OF THE ROOT BALL. PLACE ADDITIONAL PLANTING SOIL AROUND BASE AND SIDES OF BALL IN SIX-INCH (6") LIFTS. LIGHTLY TAMP EACH LIFT USING FOOT PRESSURE OR HAND TOOLS TO SETTLE BACKFILL, SUPPORT THE TREE AND ELIMINATE VOIDS. DO NOT OVER COMPACT THE BACKFILL OR USE MECHANICAL OR PNEUMATIC TAMPING EQUIPMENT.
- WHEN THE PLANTING HOLE HAS BEEN BACKFILLED TO THREE QUARTERS OF ITS DEPTH, WATER SHALL BE POURED AROUND THE ROOT BALL AND ALLOWED TO SOAK INTO THE SOIL TO SETTLE THE SOIL. DO NOT FLOOD THE PLANTING SPACE. AIR POCKETS SHALL BE ELIMINATED AND BACKFILL CONTINUED UNTIL THE PLANTING SOIL IS BROUGHT TO GRADE LEVEL.
- WHERE INDICATED ON THE DRAWINGS, BUILD A 4 INCH HIGH, LEVEL BERM OF PLANTING SOIL AROUND THE OUTSIDE OF THE ROOT BALL TO RETAIN WATER. TAMP THE BERM TO REDUCE LEAKING AND EROSION OF THE SAUCER.
- THOROUGHLY WATER THE PLANTING SOIL AND ROOT BALL IMMEDIATELY AFTER PLANTING.
- REMOVE ALL NURSERY PLANT IDENTIFICATION TAGS AND RIBBONS PRIOR TO FINAL INSPECTION.
- DO NOT STAKE OR GUY TREES UNLESS SPECIFICALLY REQUIRED BY THE CONTRACT DOCUMENTS, OR IN THE EVENT THAT THE CONTRACTOR FEELS THAT STAKING IS THE ONLY ALTERNATIVE WAY TO KEEP PARTICULAR TREES PLUMB.
- TREES THAT ARE GUYED SHALL HAVE THEIR GUYS AND STAKES REMOVED AFTER ONE FULL GROWING SEASON.
- APPLY 2 TO 4 INCHES OF MULCH BEFORE SETTLEMENT, COVERING THE ENTIRE PLANTING BED AREA. INSTALL NO MORE THAN 1 INCH OF MULCH OVER THE TOP OF THE ROOT BALLS OF ALL PLANTS. TAPER TO 2 INCHES WHEN ABUTTING PAVEMENT.
- MAINTENANCE DURING THE PERIOD PRIOR TO SUBSTANTIAL COMPLETION ACCEPTANCE SHALL CONSIST OF PRUNING, WATERING, WEEDING, MULCHING, REMOVAL OF DEAD MATERIAL, RESETTling PLANTS TO PROPER GRADES AND UPRIGHT POSITION, AND FURNISHING AND APPLYING SUCH SPRAYS AS ARE NECESSARY TO KEEP PLANTINGS REASONABLY FREE OF DAMAGING INSECTS AND DISEASE, AND IN HEALTHY CONDITION. THE THRESHOLD FOR APPLYING INSECTICIDES AND HERBICIDES SHALL FOLLOW ESTABLISHED INTEGRATED PEST MANAGEMENT (IPM) PROCEDURES. MULCH AREAS SHALL BE KEPT REASONABLY FREE OF WEEDS, GRASS.

CITY OF MILL CREEK AS-BUILT REQUIREMENTS:

- THE AS-BUILT DRAWINGS SHALL SHOW THE FINAL LOCATION OF ALL INFRASTRUCTURE LOCATED WITHIN THE PUBLIC RIGHT-OF-WAY, INCLUDING BUT NOT LIMITED TO: STREETS, CURBS, STORM DRAIN FACILITIES, CITY OWNED STREET LIGHTS, MEDIANS, SIDEWALKS, ETC. FINAL ELEVATIONS AND LOCATIONS OF ROADWAY CENTERLINE AND CURB FLOW LINE SHALL BE MEASURED EVERY FIFTY FEET AFTER THE FINAL LIFT OF ASPHALT HAS BEEN PLACED, INCLUDING THE BEGINNING AND END OF BOTH HORIZONTAL AND VERTICAL CURVES AND ALL POINTS OF INTERSECTION.
- THE AS-BUILT INFORMATION OF ALL STORM DRAINAGE CONVEYANCE FACILITIES SUCH AS CATCH BASINS, INLETS, PIPES AND SWALES SHALL INCLUDE INVERTS AND RIM ELEVATIONS, AS WELL AS THE MATERIAL TYPE AND SIZE. OPEN CHANNELS SHALL ALSO INCLUDE CROSS-SECTIONS AT APPROPRIATE LOCATIONS TO VERIFY DESIGN REQUIREMENTS.
- THE FINAL AS-BUILT STORAGE VOLUME AND DIMENSIONS OF THE STORM WATER DETENTION FACILITIES, ALONG WITH THE ORIFICE SIZE (S) OF THE CONTROL STRUCTURE, SHALL BE FIELD MEASURED AND INCLUDED ON THE AS-BUILT DRAWINGS.
- AS-BUILT INFORMATION CAN EITHER BE SHOWN BY ADDING NEW INFORMATION TO A SET OF THE APPROVED DRAWINGS OR CREATING A NEW SEPARATE PLAN SET. FOR ELEVATION DIFFERENCES, A LINE SHOULD CROSS OUT OLD ELEVATIONS AND NEW ELEVATIONS SHOULD BE ENTERED NEXT TO THE ORIGINAL INFORMATION. ORIGINAL INFORMATION SHALL NOT BE REMOVED FROM THE APPROVED PLANS UNLESS APPROVED BY THE CITY ENGINEER.
- AS-BUILT DRAWINGS SHALL BE SUBMITTED ELECTRONICALLY TO THE CITY ENGINEER IN ONE COMPLETE FILE IN PDF FORMAT.

PROJECT CONSTRUCTION SEQUENCE:

- ATTEND PRE-CONSTRUCTION MEETING.
- FLAG OR FENCE CLEARING LIMITS.
- POST SIGN WITH NAME AND PHONE NUMBER OF ESC SUPERVISOR.
- MARK CLEARING LIMITS (BMP C104).
- COORDINATE CITY INSPECTION OF LIMITS OF CLEARING AND ESC FACILITIES.
- INSTALL ESC FACILITIES (PERIMETER PROTECTION, SILT FENCE, CONSTRUCTION ENTRANCE, SEDIMENT TRAP, ETC.) PER PLAN.
- PERFORM CLEARING WITHIN THE LIMITS SHOWN ON THE PLAN AND REMOVE AND DISPOSE DEBRIS TO APPROVED OFF-SITE DISPOSAL SITE.
- STRIP AND STOCKPILE THE TOPSOIL FROM THE AREAS TO BE GRADED.
- EXCAVATE AND INSTALL DETENTION TANK.
- REMOVE SEDIMENT TRAP.
- COMPLETE ROUGH GRADING AND FOUNDATION EXCAVATION.
- MAINTAIN AND RELOCATE SURFACE WATER CONTROLS AND EROSION CONTROL MEASURES OR INSTALL NEW MEASURES SO THAT, AS SITE CONDITIONS CHANGE, THE EROSION AND SEDIMENT CONTROLS SHALL ALWAYS BE IN ACCORDANCE WITH THE STATE AND LOCAL EROSION AND SEDIMENT CONTROL STANDARDS AND MANUFACTURER'S RECOMMENDATIONS AND THIS PLAN.
- COVER ALL AREAS THAT WILL BE UNWORKED FOR MORE THAN SEVEN DAYS DURING THE DRY SEASON OR TWO DAYS DURING THE WET SEASON WITH STRAW, WOOD FIBER MULCH, COMPOST, PLASTIC SHEETING OR EQUIVALENT (BMP C121, C122, C123).
- INSTALL UNDERGROUND UTILITIES AND STORM DRAINAGE FACILITIES.
- BACKFILL AND FINISH GRADE BACK OF WALKS, BUILDING FOUNDATION, ETC. AND STABILIZE ALL DISTURBED AREAS WITHIN SEVEN DAYS.
- HYDROSEED (OR EQUAL) ALL DISTURBED OR CLEARED AREAS TO REMAIN UNWORKED FOR MORE THAN 30 DAYS (BMP C120).
- CLEAN OUT STORM DRAINAGE SYSTEM.
- UPON COMPLETION OF THE PROJECT, ALL DISTURBED AREAS MUST BE STABILIZED AND BMPS REMOVED IF APPROPRIATE.
- CONTRACTOR IS RESPONSIBLE TO PROVIDE THE DESIGN ENGINEER WITH WRITTEN DOCUMENTATION OF ALL UNDERGROUND UTILITIES CHANGED, RELOCATED OR NOT SHOWN ON THE APPROVED CONSTRUCTION PLANS.

LEGEND			ABBREVIATIONS			
DESCRIPTION	EXISTING	PROPOSED				
PROPERTY LINE	---	---	ABN	ABANDONED	MIN	MINIMUM
ADJACENT PROPERTY LINE	---	---	BLDG	BUILDING	MJ	MECHANICAL JOINT
CENTERLINE	---	---	BOW	BOTTOM OF WALL	MON	MONUMENT
CLEARING LIMITS	---	---	CL	CENTERLINE	NTS	NOT TO SCALE
SILT FENCE	--- X --- X ---	--- X --- X ---	CB	CATCH BASIN	OC	ON CENTER
CONTOUR LINE	--- 100 ---	--- 100 ---	CMP	CORRUGATED METAL PIPE	PC	POINT OF CURVATURE
FENCE	--- □ --- □ ---	--- □ --- □ ---	CO	CLEANOUT	PI	POINT OF INTERSECTION
SANITARY SEWER LINE	--- S --- S ---	--- S --- S ---	CONC	CONCRETE	PVI	POST INDICATOR VALVE
MANHOLE	--- (M) ---	--- (M) ---	CONST	CONSTRUCTION	PL	PROPERTY LINE
STORM DRAIN MAIN	--- SD --- SD ---	--- SD --- SD ---	CP	CONCRETE PIPE	PT	POINT OF TANGENCY
STORM DRAIN PIPE	--- SD --- SD ---	--- SD --- SD ---	CU YD	CUBIC YARD	PVC	POLYVINYL CHLORIDE PIPE
ROOF DRAIN	--- R --- R ---	--- R --- R ---	DDCA	DOUBLE DETECTOR CHECK VALVE ASSEMBLY	PVI	POINT OF VERTICAL INTERSECTION
FOOTING DRAIN	--- F --- F ---	--- F --- F ---	DI	DUCTILE IRON PIPE	PVMT	PAVEMENT
PRESSURE LINE	--- P --- P ---	--- P --- P ---	DIA	DIAMETER	PVT	POINT OF VERTICAL TANG.
CATCH BASIN (TYPE 1)	---	---	DIP	DUCTILE IRON PIPE	R	RADIUS
CATCH BASIN (TYPE 2)	---	---	EACH	EACH	REINF	REINFORCEMENT
CLEANOUT	---	---	EJ	EXPANSION JOINT	RJ	RESTRAINED JOINT
CLEANOUT AND WYE	---	---	ELEV	ELEVATION	RET	RETAINING
GRADE BREAK	---	---	EOP	EDGE OF PAVEMENT	RT	RIGHT
SURFACE SWALE	---	---	EX	EXISTING	SD	STORM DRAIN
DRAINAGE ARROW	---	---	FDC	FIRE DEPT. CONNECTION	SECT	SECTION
WATER LINE	--- WA --- WA ---	--- WA --- WA ---	FFE	FINISHED FLOOR ELEVATION	SDMH	STORM DRAIN MANHOLE
WATER METER	---	---	FH	FIRE HYDRANT	SIM	SIMILAR
FIRE HYDRANT	---	---	FL	FLANGE	SQ	SQUARE
FDC	---	---	FT	FEET/FOOT	SS	SANITARY SEWER
PIV	---	---	GV	GATE VALVE	SSMH	SANITARY SEWER MANHOLE
GATE VALVE	---	---	HP	HIGH POINT	STA	STATION
TEE	---	---	HT	HEIGHT	STD	STANDARD
90° BEND	---	---	ID	INSIDE DIAMETER	STL	STEEL
THRUST BLOCKING	---	---	IE	INVERT ELEVATION	TB	THRUST BLOCK
CAP	---	---	L	LENGTH/LINE	TOW	TOP OF CURB
CONCRETE PAVEMENT	---	---	LCPE	LINED CORRUGATED POLYETHYLENE PIPE	TOW	TOP OF WALL
ASPHALT PAVEMENT	---	---	LF	LINEAL FOOT	TOP	TOP ELEVATION
CRUSHED SURFACING	---	---	LP	LOW POINT	TYP	TYPICAL
ROCKERY	---	---	LT	LEFT	VC	VERTICAL CURVE
SPOT ELEVATION	--- 20.0 ---	--- 20.0 ---	MAX	MAXIMUM	W/	WITH
TELEPHONE LINE	---	---	MECH	MECHANICAL	WM	WATER METER
POWER LINE	---	---	MH	MANHOLE		
GAS LINE	---	---				
SIGN	---	---				

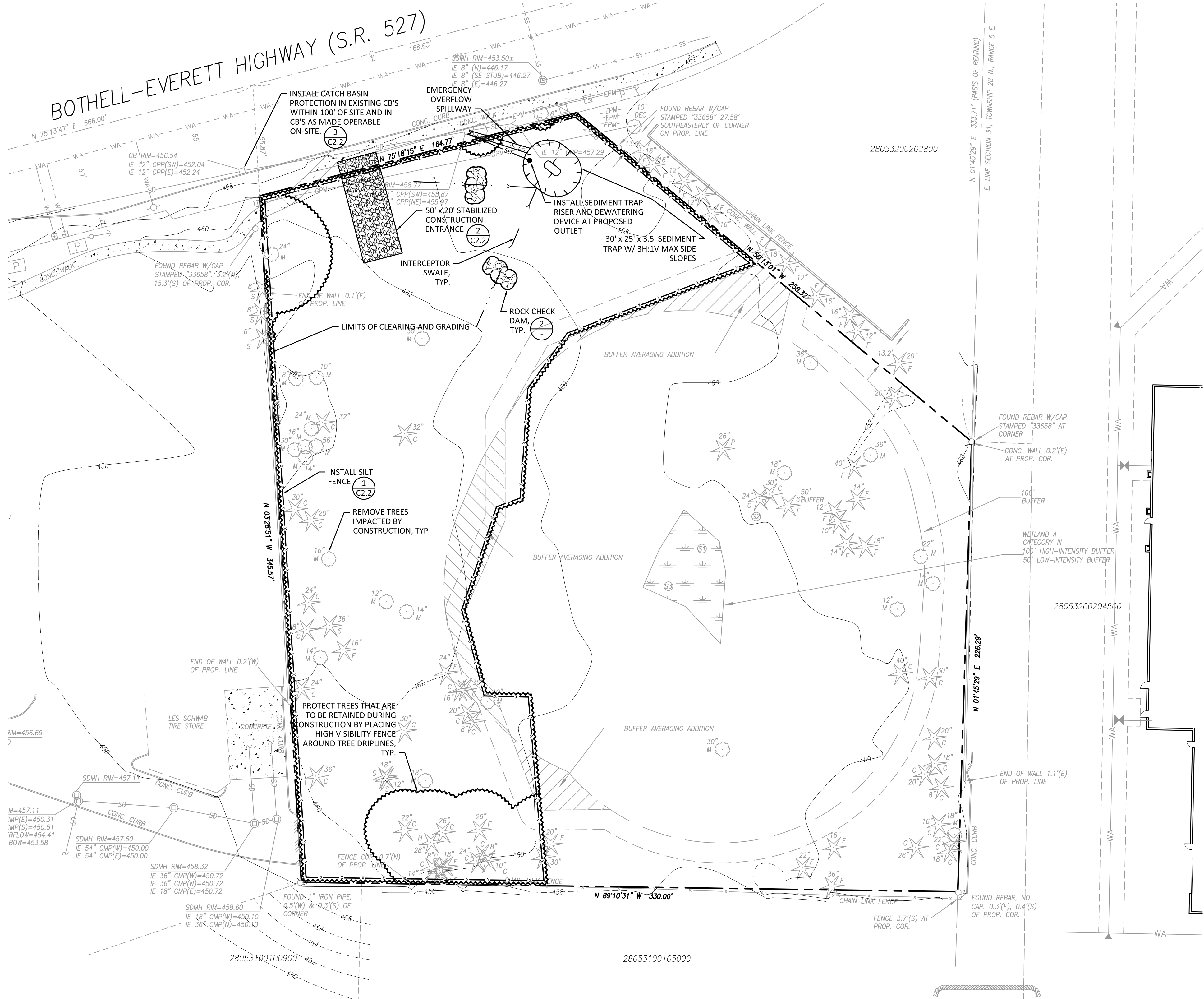
STELLA & FLOYD'S DOG DAYCARE
13209 BOTHELL-EVERETT HWY
MILL CREEK, WA 98012
COVER SHEET AND
GENERAL NOTES

SHEET:

C1.1

Exhibit 15

NE 1/4, NE 1/4, SECTION 31, TOWNSHIP 28 NORTH, RANGE 5 EAST, W.M.



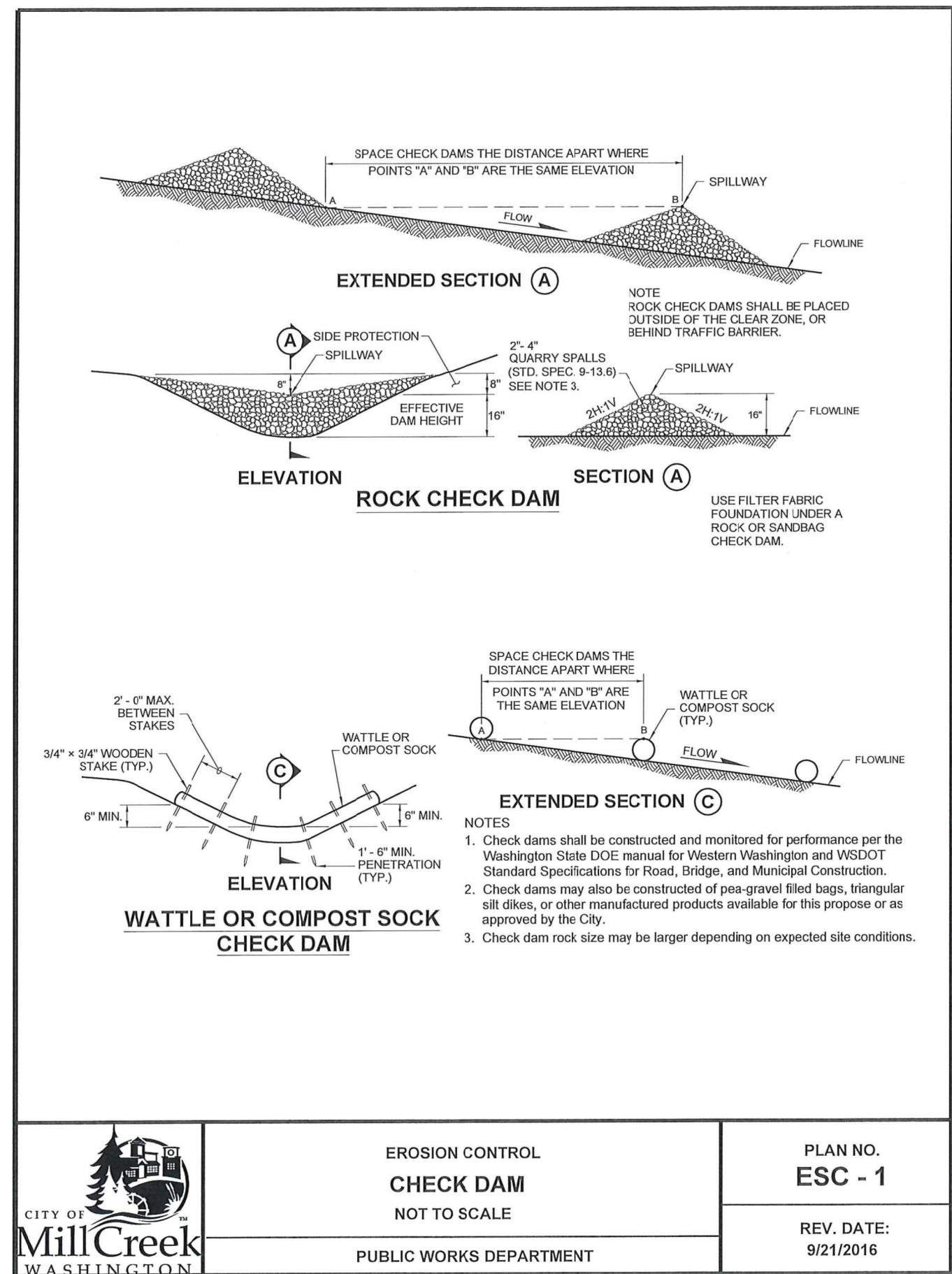
1 TEMPORARY EROSION CONTROL PLAN

SCALE: 1" = 30'

THIS PLAN IS PROVIDED FOR CONCEPTUAL REVIEW PURPOSES ONLY AND WILL NEED TO BE FURTHER DEVELOPED FOLLOWING PRE-APPLICATION MEETING WITH CITY OF MILL CREEK.

2 CITY OF MILL CREEK STANDARD DETAIL

SCALE: NTS



01/18/19

MARK	DATE	DESCRIPTION
	06/29/18	PRELIMINARY
	12/12/18	PRE-APP SUBMITTAL (PRELIM)
	01/18/19	LAND USE SUBMITTAL

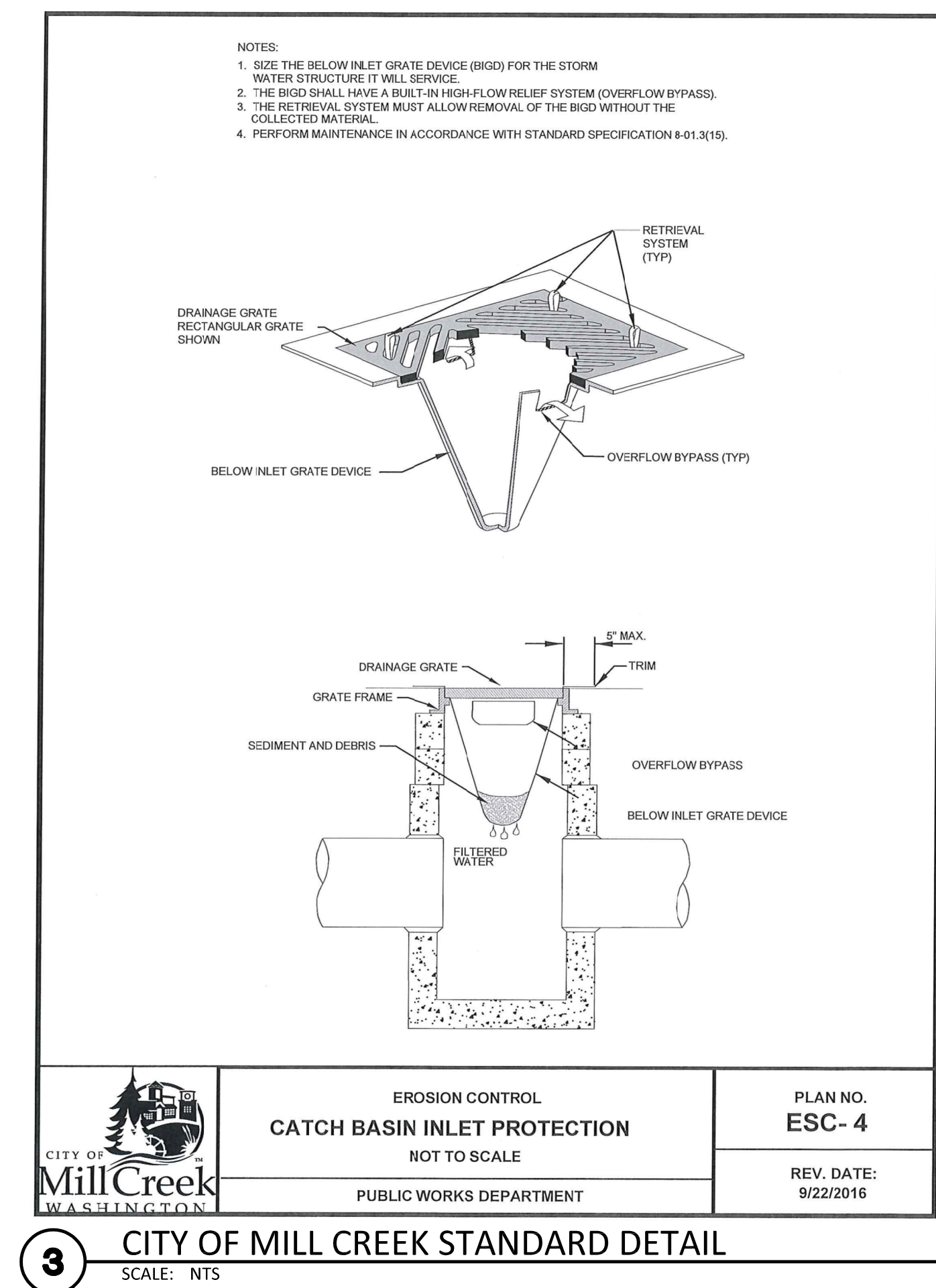
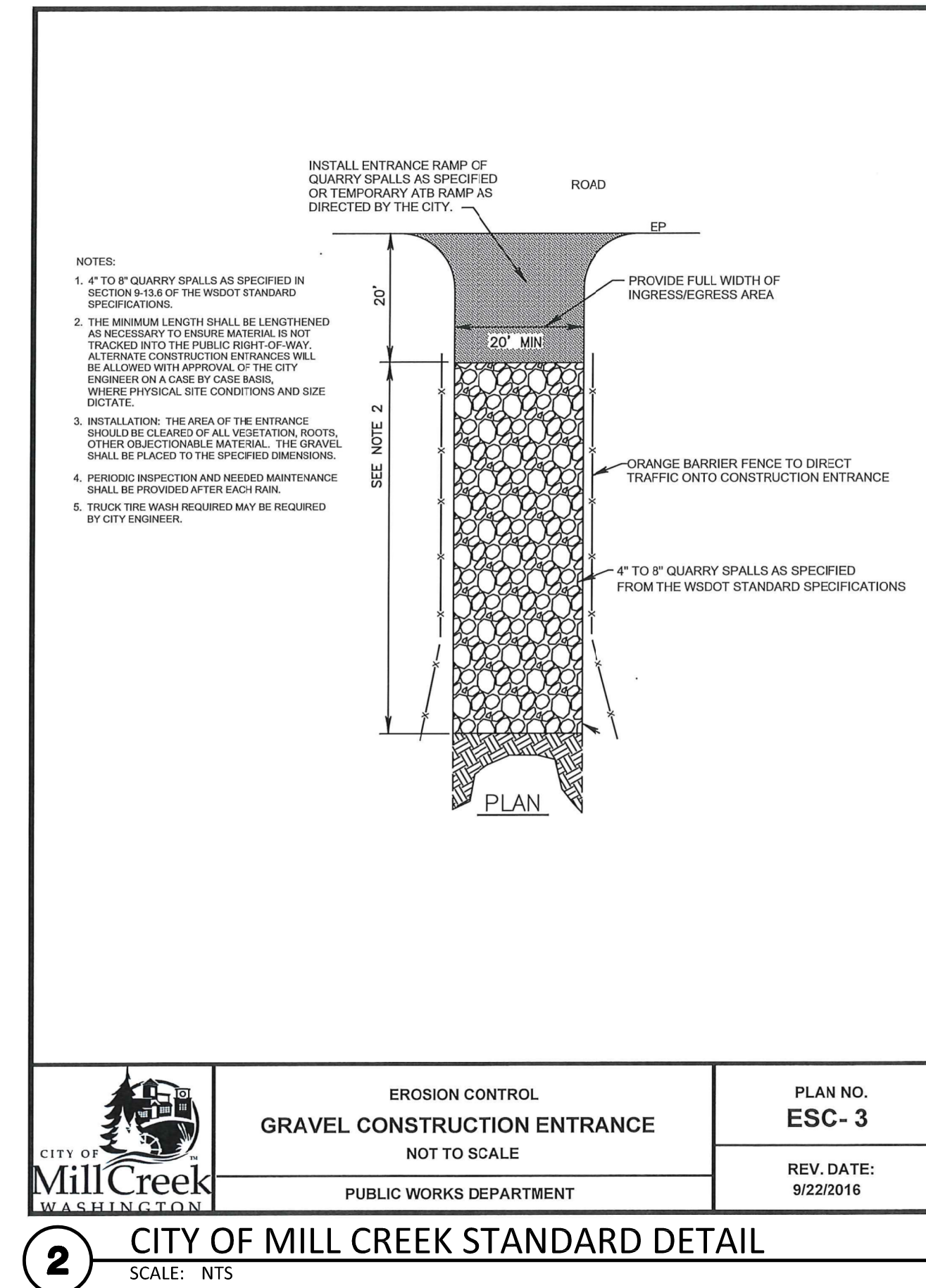
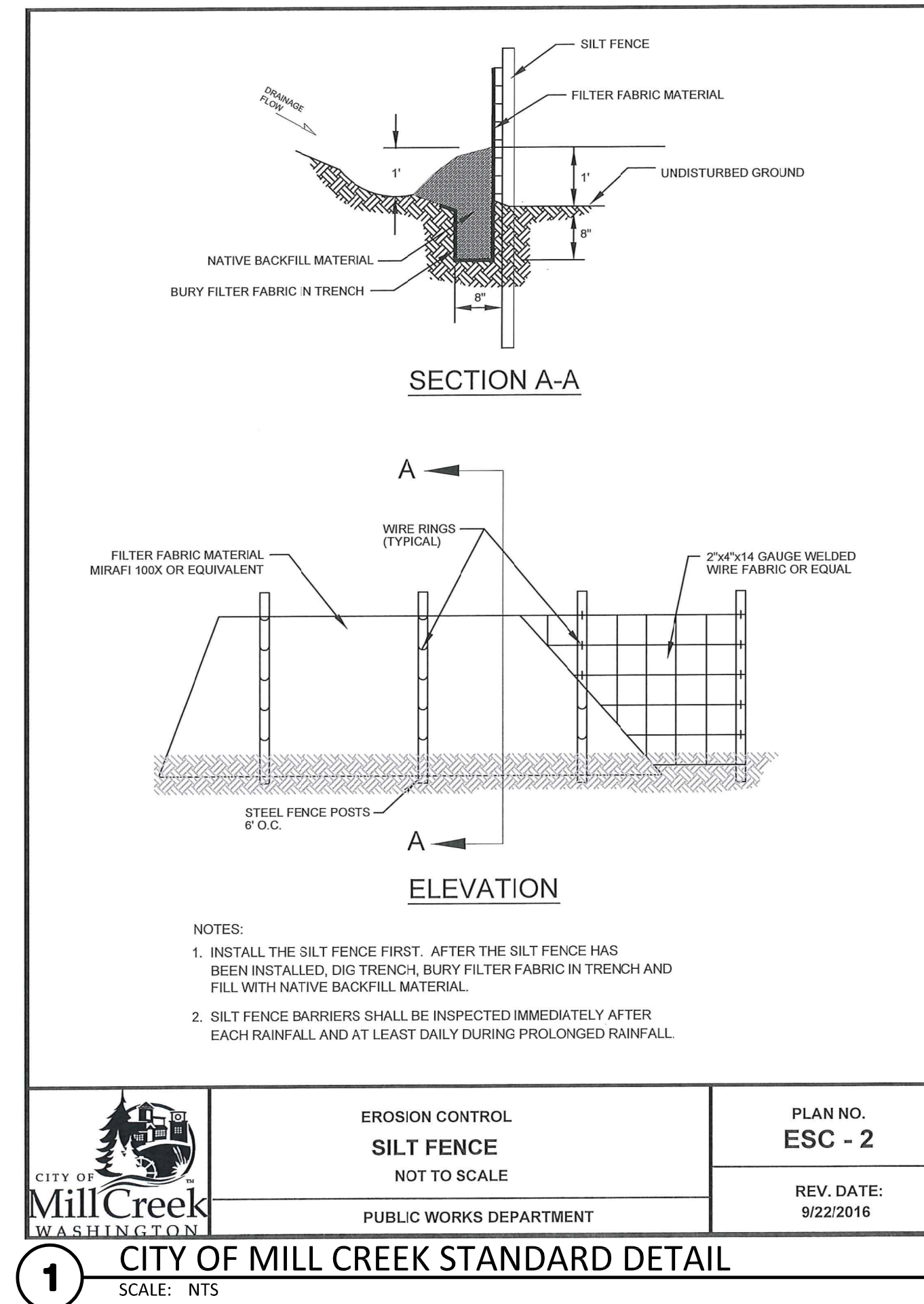
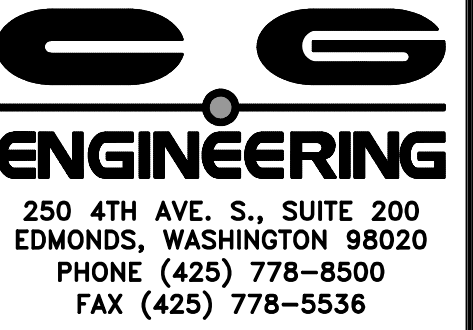
DESIGN:	TAF
DRAWN:	ATD
CHECK:	JPU
JOB NO:	18129.20
DATE:	06/29/18

STELLA & FLOYD'S DOG DAYCARE
13209 BOTHELL-EVERETT HWY
MILL CREEK, WA 98012
TEMPORARY EROSION
CONTROL PLAN

SHEET:

C2.1

NE 1/4, NE 1/4, SECTION 31, TOWNSHIP 28 NORTH, RANGE 5 EAST, W.M.



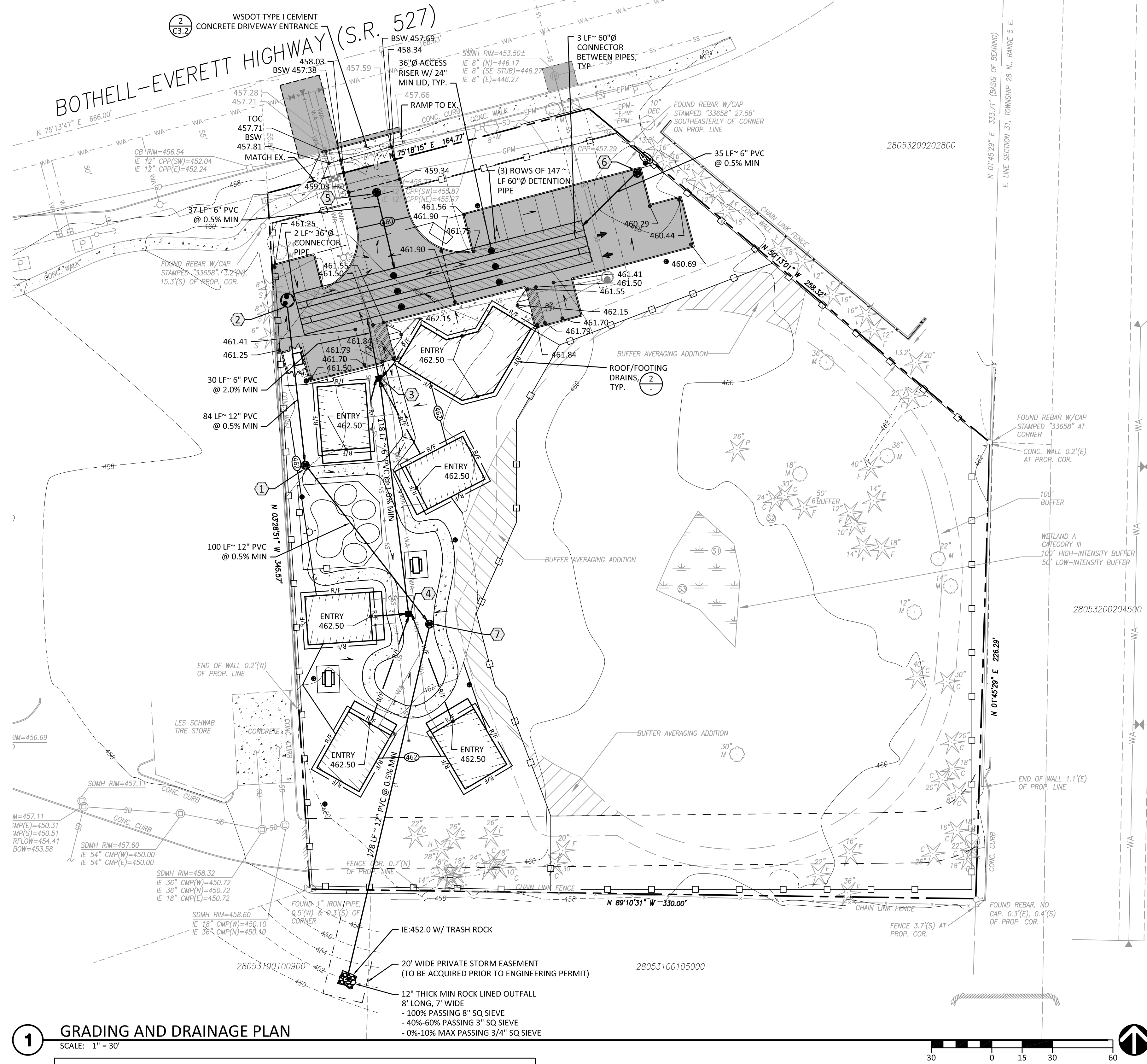
DESIGN:	TAF
DRAWN:	ATD
CHECK:	JPU
JOB NO:	18129.20
DATE:	06/29/18

STELLA & FLOYD'S DOG DAYCARE
13209 BOTHELL-EVERETT HWY
MILL CREEK, WA 98012

SHEET:

C2.2

NE 1/4, NE 1/4, SECTION 31, TOWNSHIP 28 NORTH, RANGE 5 EAST, W.M.

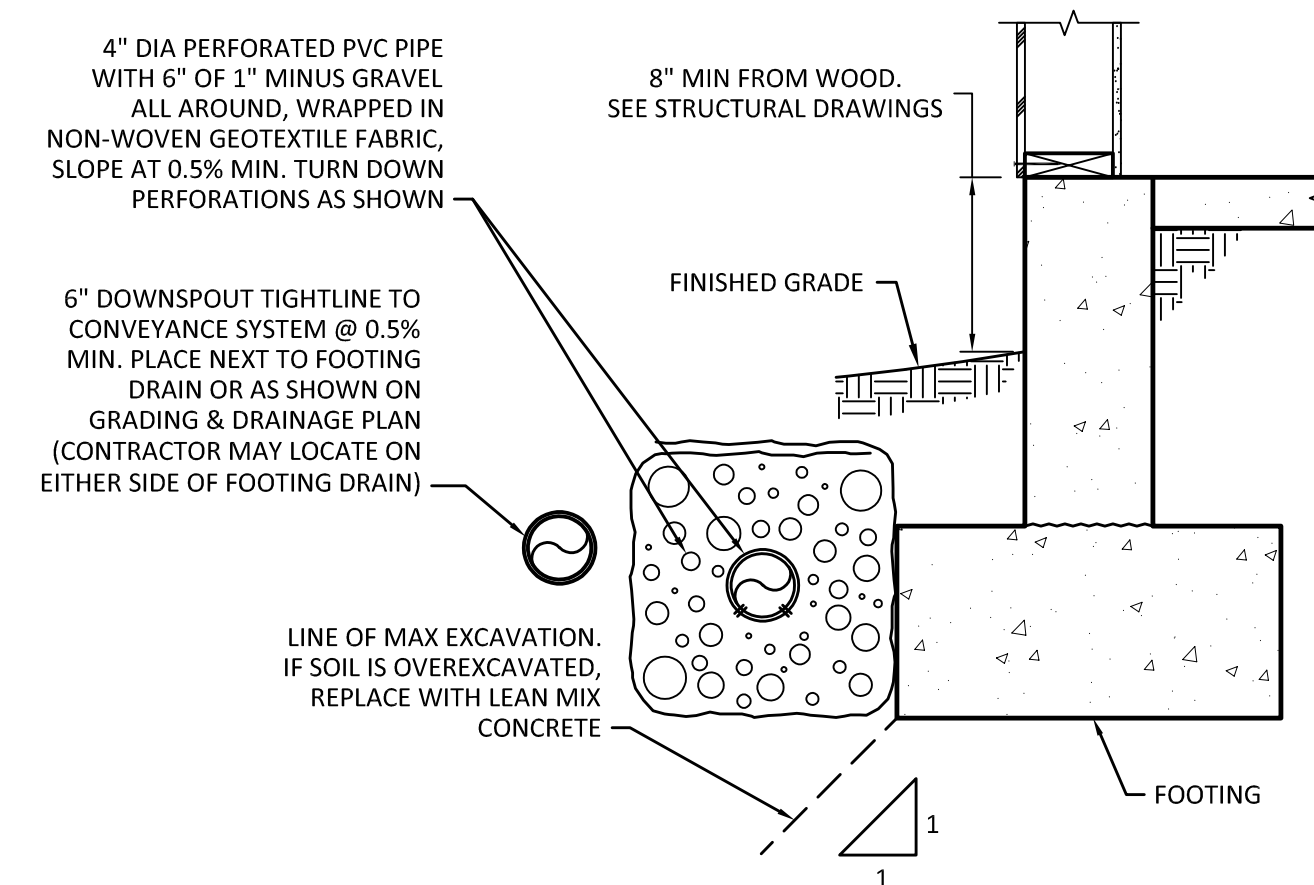


1 GRADING AND DRAINAGE PLAN

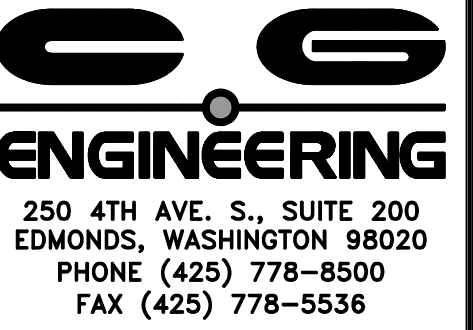
SCALE: 1" = 30'

THIS PLAN IS PROVIDED FOR CONCEPTUAL REVIEW PURPOSES ONLY AND WILL NEED TO BE FURTHER DEVELOPED FOLLOWING PRE-APPLICATION MEETING WITH CITY OF MILL CREEK.

MARK	TYPE	RIM ELEV	INV ELEV	NOTES
①	48" TYPE II	462.0	12" (S) = 453.08 12" (N) = 453.08	SOLID LID
②	60" TYPE II	461.0	36" (E) = 453.50 12" (S) = 453.50	FLOW CONTROL STRUCTURE W/ SOLID LIDS ① C3.2
③	TYPE I	461.40	6" (E,W) = 458.72 6" (S) = 458.13 6" (N) = 458.03	-
④	TYPE I	461.15	6" (S,E,W) = 459.41 6" (N) = 459.31	-
⑤	48" TYPE II	459.0	6" (S) = 456.50	CATCH BASIN W/ STORM FILTER FOR WATER QUALITY. STORM FILTER DESIGN TO BE SUBMITTED W/ CONSTRUCTION SET.
⑥	48" TYPE II	460.10	6" (W) = 457.60	CATCH BASIN W/ STORM FILTER FOR WATER QUALITY. STORM FILTER DESIGN TO BE SUBMITTED W/ CONSTRUCTION SET.
⑦	48" TYPE II	461.25	12" (N) = 452.58 12" (S) = 452.58	SOLID LID



2 FOOTING AND ROOF DRAIN SECTION

[illegible]

DESIGN:	TAF
DRAWN:	ATD
CHECK:	JPU
JOB NO:	18129.20
DATE:	06/29/18

STELLA & FLOYD'S DOG DAYCARE
13209 BOTHELL-EVERETT HWY
MILL CREEK, WA 98012

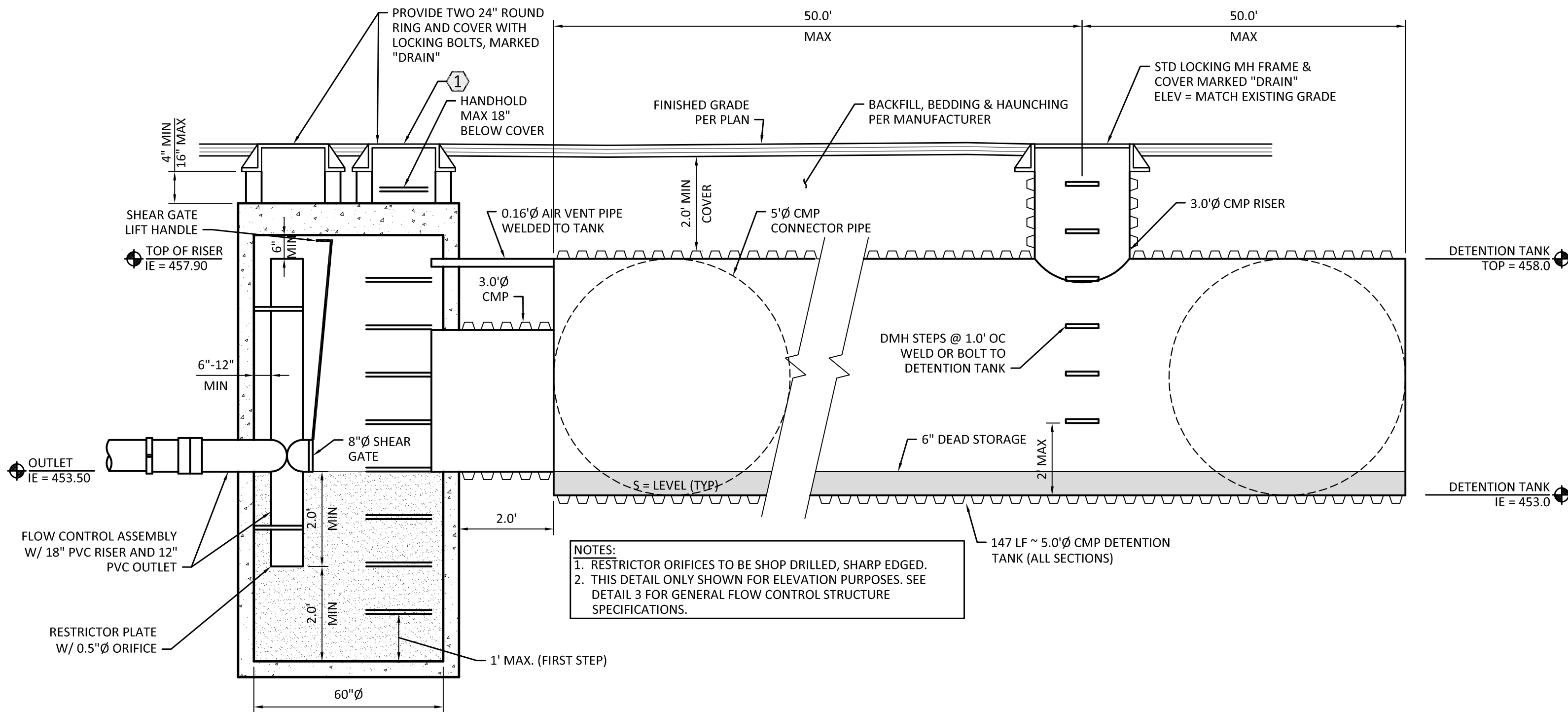
GRADING AND DRAINAGE PLAN
AND DETAILS

LE NAME:

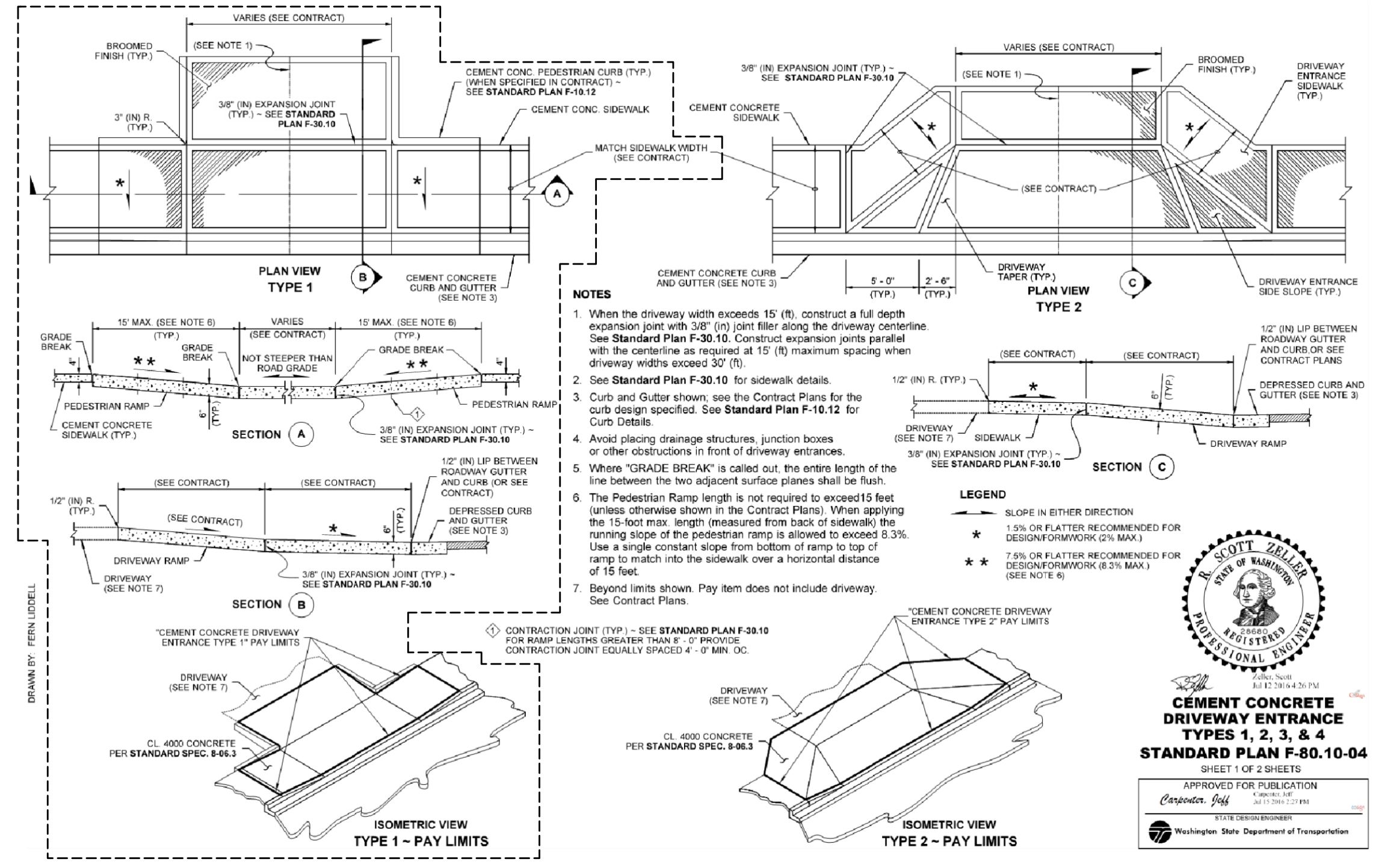
SHEET:

C3.1

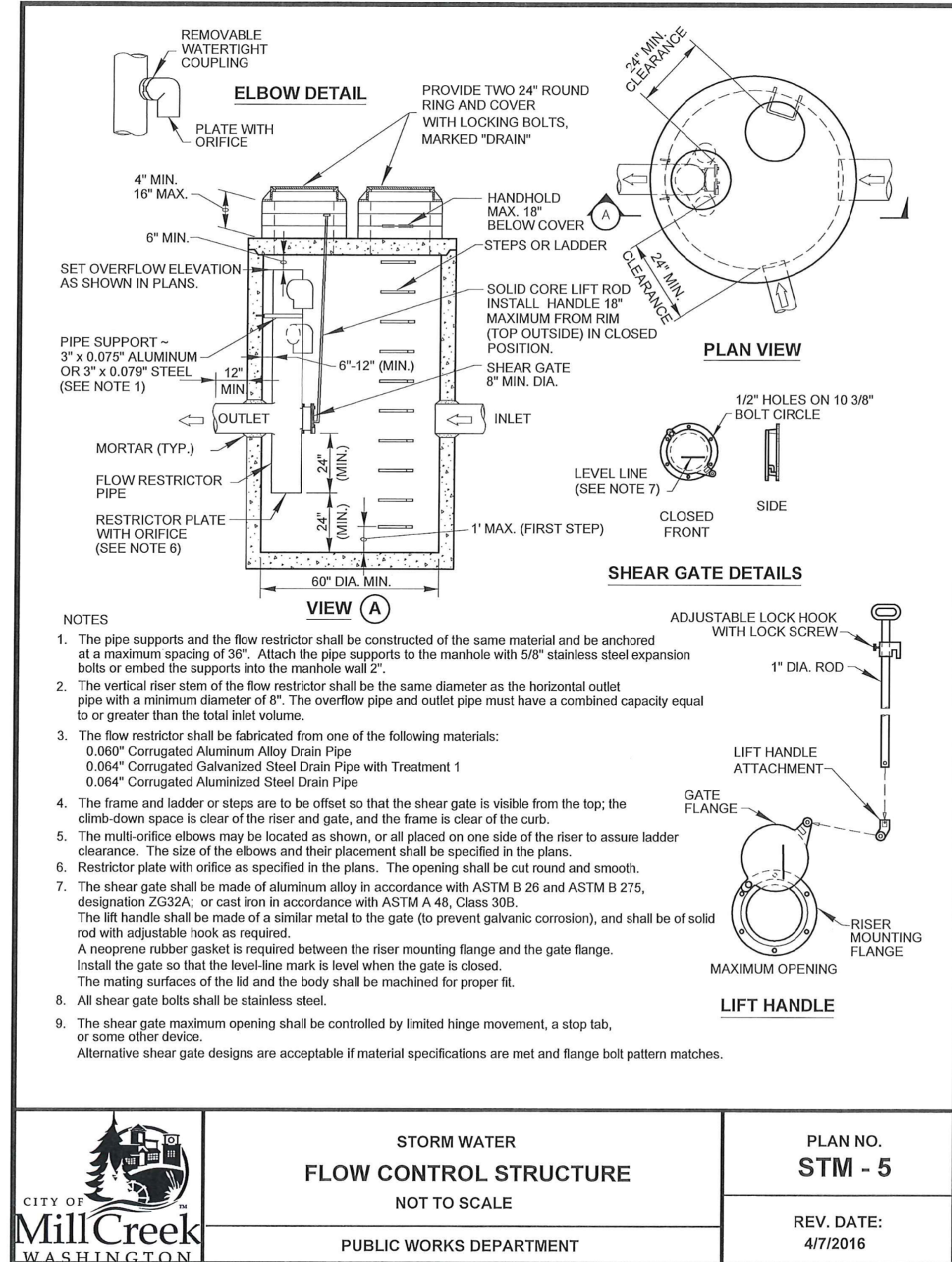
NE 1/4, NE 1/4, SECTION 31, TOWNSHIP 28 NORTH, RANGE 5 EAST, W.M.



1 FLOW CONTROL STRUCTURE WITH DETENTION TANK - SECTION
SCALE: NTS



2 WSDOT STANDARD DETAIL
SCALE: NTS



3 CITY OF MILL CREEK STANDARD DETAIL
SCALE: NTS

C.E. ENGINEERING
250 4TH AVE. S., SUITE 200
EDMONDS, WASHINGTON 98020
PHONE (425) 778-8500
FAX (425) 778-5536

SCOTT ZIEGLER
STATE OF WASHINGTON
REGISTERED PROFESSIONAL ENGINEER
01/18/19

MARK	DATE	DESCRIPTION
	06/29/18	PRELIMINARY
	12/12/18	PRE-APP SUBMITTAL (PRELIM)
	01/18/19	LAND USE SUBMITTAL

DESIGN:	TAF
DRAWN:	ATD
CHECK:	JPU
JOB NO:	18129.20
DATE:	06/29/18

STELLA & FLOYD'S DOG DAYCARE
13209 BOTHELL-EVERETT HWY
MILL CREEK, WA 98012

GRADING AND DRAINAGE DETAILS

SHEET:

C3.2

THIS PLAN IS PROVIDED FOR CONCEPTUAL REVIEW PURPOSES ONLY AND WILL NEED TO BE FURTHER DEVELOPED FOLLOWING PRE-APPLICATION MEETING WITH SILVER LAKE WATER AND SEWER DISTRICT.

SHEET:

C4.1

C4.1