

Everett Public Schools Play and Learn



Play and Learn is a free opportunity for children birth thru five and their parents and/or caregivers to engage together playing, creating art, listening to stories and singing songs! No reservation needed.
www.everettsd.org/playandlearn

DAILY SCHEDULE

- 10:30 Child-Led Play
- 11:40 Clean Up
- 11:50 Circle Time*
- 12:00 Good Bye!

*Dual-Language Circle Time is the 2nd week of each month

JUNE 2026				
Mon	Tues	Wed	Thurs	Fri
1 Lively Center	2 EPL Evergreen	3 Mill Creek City Hall N	4 Mill Creek City Hall N	5 Sequoia HS Gym
8 <u>Lively Center</u>	9 <u>EPL Evergreen</u>	10 <u>Mill Creek City Hall N</u>	SUMMER	BREAK

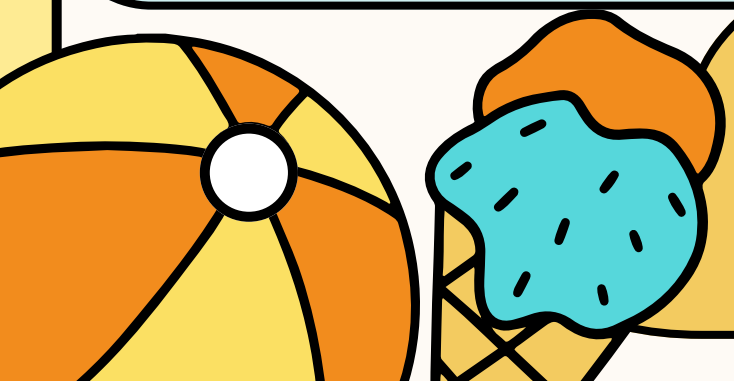
Here are some fun free and low-cost fun activities to enjoy this summer!

Explore a library! The local library offers many fun ways to explore the world with your little one, including summer reading programs, story times, and story walks! Visit www.sno-isle.org and www.epls.org for more info!

P&L Locations:

- Lively Center**
1918 Seattle Hill Rd, Mill Creek.
- Everett Public Library Evergreen**
9512 Evergreen, Everett
- Mill Creek City Hall North**
15720 Main St, Mill Creek
- Sequoia HS Gym**
3516 Rucker Ave, Everett

Imagine Children's Museum hosts free Community Access nights the third Thursday of every month from 3-7 p.m. for all families with children ages 12 and under! www.imaginecm.org



Evergreen Arboretum & Gardens - visit any day between dawn and dusk or join them for their SummerFest FREE Family Event on 7/18 11a-2p.
145 Alverson Blvd, Everett, WA
www.evergreenarboretum.com



Marysville Free Outdoor Children's Concerts & Movies - Concerts are at Comeford Park and Movies at Jennings Park.
www.marysvillewa.gov/673/Engage-in-community-events

NW Stream Center/Elevated Forest & Wetland Walk—600 128 St SE, Everett. Tues Sat (10a-4p). Take a walk on the ½ mile Elevated Trail above the wetlands! Read the signs & learn about ecology. 5 & under are FREE. Adults \$7.
www.streamkeeper.org/discover

Little Arrowhead Nature Explore Space
615 Arrowhead Rd, Camano. Outdoor play area for children birth—5 (most amenable ages 2 & older) including climbing, balance bicycles, water play, loose parts, art and more! 10 a—3 p
www.arrowheadranchcamano.com/l-a-n-e

Explore Area Parks! Here are some local favorites:

- Willis D. Tucker Park - 6705 Puget Park Dr, Snohomish
- Forest Park—802 E Mukilteo Blvd, Everett
- North Creek Park - 1011 182nd St SE, Mill Creek.
- Miners Corner - 22903 45th Ave SE, Bothell

www.snohomishcountywa.gov/5485/Playgrounds

Visit Kelsey Creek Farm in Bellevue!
Free farm w/ ponies, goats, sheep, cows, pigs & more!
9a-3p. 410 130th Pl. SE
www.bellevuewa.gov/city-government/departments/parks/community-centers/kelsey-creek-farm

Regal & AMC Theaters offer discounted admissions to selected movie times (\$1-\$3) June - August.
<https://www.regmovies.com/promotions/summer-movie-express>
www.amctheatres.com/amc-scene/summer-movie-camp-for-kids

Explore Bellevue Botanical Gardens - trails, 53-acres of gardens and wetlands. A 150-foot suspension bridge spans across a ravine, and it will leave your little adventurers in awe. The garden is open from dusk till dawn daily. Admission is free. bellevuebotanical.org